



# Roxtec CF 16 doorvoering

Doorvoering met een ondiep ontwerp met metalen frame.

De Roxtec CF 16 is een ondiepe kabelafdichting voor behuizingen. De doorvoer is verkrijgbaar in poedergecoat staal of roestvast staal en ook in versies die kunnen worden geopend. De roestvaststalen versie is IP69K-geclassificeerd.



- Lichtgewicht
- Ruimtebesparend
- Geschikt voor kabels met connector

## Producteigenschappen



IP/UL NEMA

## Installatiestructuur



Kasten en behuizingen

## Montagetype



Bouten

## Specificaties en certificaten

### Dichtheid

- IP 66/67, IP 69K, UL/NEMA 4,4X,12,13

## Afmetingen frame

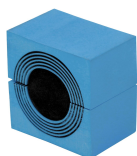
mm/kg

De onderstaande frame-uitvoeringen zijn een beperkte selectie. Ga naar [roxtec.com](https://www.roxtec.com) voor het volledige assortiment frames en configuraties.

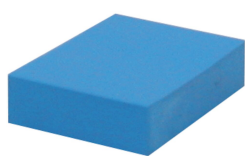
| Titel              | Frame-openingen | Vrije doorvoerruimte | Buitenafmetingen WxHxD | Afmetingen opening w x h | Gewicht | Art. nr.      |
|--------------------|-----------------|----------------------|------------------------|--------------------------|---------|---------------|
| CF 16              | 1               | 40 x 160             | 93 x 234 x 42          | 71(+1/-1) x 187(+2/-0.5) | 1.4     | CSF0000160010 |
| CF 16 AISI304      | 1               | 40 x 160             | 93 x 234 x 42          | 71(+1/-1) x 187(+2/-0.5) | 1.4     | ECF0001600021 |
| CF 16 AISI304 OPEN | 1               | 40 x 160             | 93 x 234 x 42          | 71(+1/-1) x 187(+2/-0.5) | 1.2     | 5CF0000004946 |
| CF 16 OPEN         | 1               | 40 x 160             | 93 x 234 x 42          | 71(+1/-1) x 187(+2/-0.5) | 1.4     | CSF1000160010 |

## Gegevens van afdichtcomponenten

### Afdichtcomponenten



CM module met Multidiameter™



Massieve CM compensatiemodule



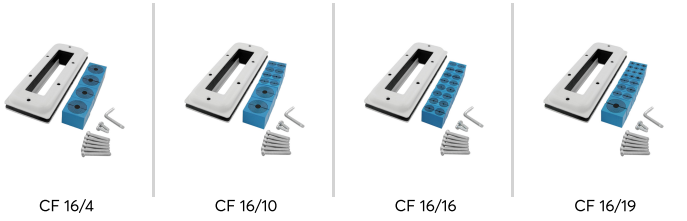
vetstick

Ga naar [roxtec.com](https://www.roxtec.com) voor uitgebreide informatie.



# Vooraf geconfigureerde doorvoersets

mm/kg



| Titel    | Configuratie                                 | Buitenafmetingen<br>WxHxD | Afmetingen opening<br>w x h | Gewicht | Art. nr.      |
|----------|--|---------------------------|-----------------------------|---------|---------------|
| CF 16/4  | 4x (9.5-32.5)                                | 93 x 234 x 42             | 71(-2) x 187                | 1.7     | CKT0008020004 |
| CF 16/10 | 2x (9.5-32.5), 8x (3.5-16.5)                 | 93 x 234 x 42             | 71(-2) x 187                | 1.7     | CKT0008020010 |
| CF 16/16 | 16x (3.5-16.5)                               | 93 x 234 x 42             | 71(-2) x 187                | 1.7     | CKT0008020016 |
| CF 16/19 | 1x (9.5-32.5), 6x (3.5-16.5), 12x (3.5-10.5) | 93 x 234 x 42             | 71(-2) x 187                | 1.7     | CKT0008020119 |

The product information provided by Roxtec does not release the purchaser of the Roxtec system, or part thereof, from the obligation to independently determine the suitability of the products for the intended process, installation and/or use.

Roxtec gives no guarantee for the Roxtec system or any part thereof and assumes no liability for any loss or damage whatsoever, whether direct, indirect, consequential, loss of profit or otherwise, occurred or caused by the Roxtec systems or installations containing components not manufactured by an authorized manufacturer and/or occurred or caused by the use of the Roxtec system in a manner or for an application other than for which the Roxtec system was designed or intended.

Roxtec expressly excludes any implied warranties of merchantability and fitness for a particular purpose and all other express or implied representations and warranties provided by statute or common law. User determines suitability of the Roxtec system for intended use and assumes all risk and liability in connection therewith. In no event shall Roxtec be liable for indirect, consequential, punitive, special, exemplary or incidental damages or losses.

The Roxtec products are offered and sold in accordance with the conditions of the Roxtec General Terms of Sales. The latest version of the Roxtec General Terms of Sales can be downloaded from <https://www.roxtec.com/en/about-us/about-roxtec/general-terms-of-sales/>

We reserve the right to make changes to the product and technical information without further notice. Any errors in print or entry are no claims for indemnity. The content of this publication is the property of Roxtec International AB and is protected by copyright.

This document was generated on: 2024-04-17